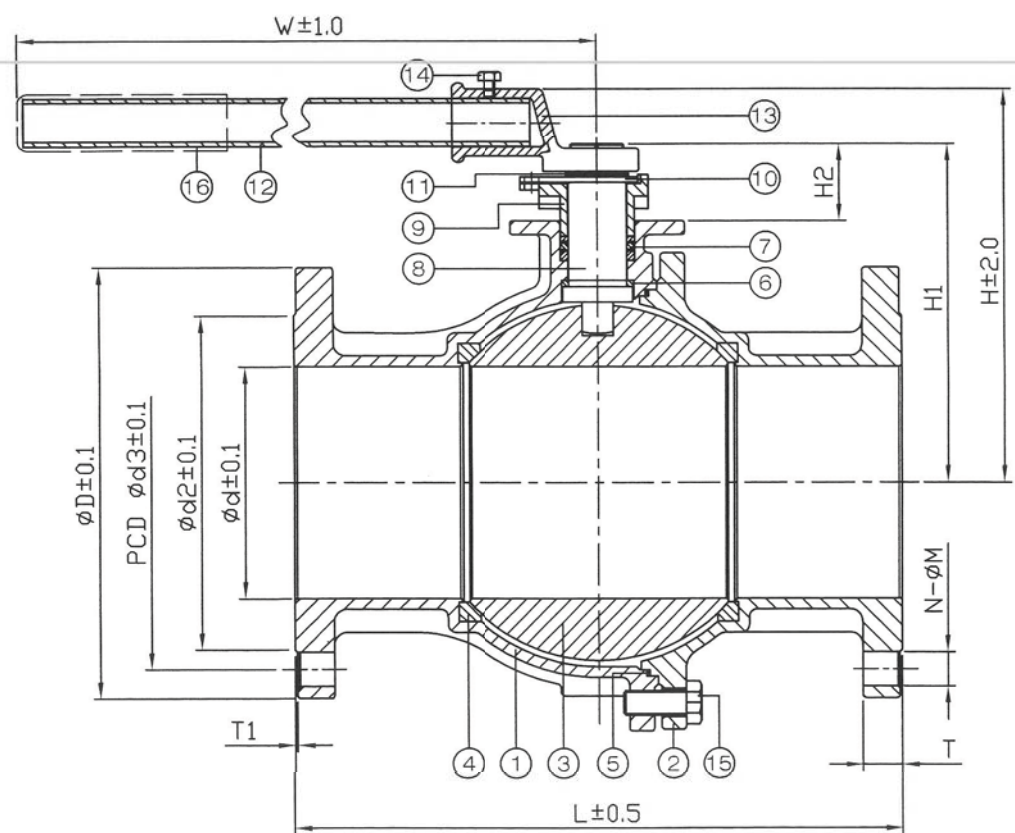


NPS	L	d	N	M	d2	d3	D	T	T1	H	H1	H2	W	Torque (in-lb)	
														break away	Action
6"	15.51	5.91	8	0.87	8.5	9.51	10.98	1	0.06	10.1	8.66	1.97	29.25	1637.44	1460.42

unit:in



ITEM	PARTS	MATERIAL
1	BODY	ASTM A351-CF8M
2	CAP	
3	BALL	PTFE
4	BALL SEAT	
5	BODY SEAL	
6	THRUST WASHER	
7	PACKING	ASTM A276-316
8	STEM	
9	GLAND	AISI 304
10	STOPPER	
11	CIRCLIPS FOR SHAFT	
12	STEEL TUBE	
13	WRENCH BLOCK	PVC
14	BOLT	
15	BOLT	
16	HANDLE SLEEVE	

CHECK BY	DRAWING BY	DATE	SPECIFICATION	2-PC Flanged End Ball Valve ANSI 150
	<i>Dune</i>	Mar.14.2008	MATERIAL	ASTM A351-CF8M
			PROCESS/Nr.	
			UNIT / SCALE	mm

△			
△			
△			
Revise	Description	Date	Approve
DRAWING NO. NP2020S-6"			