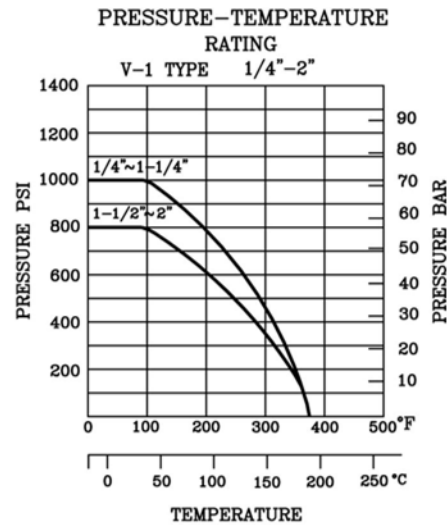
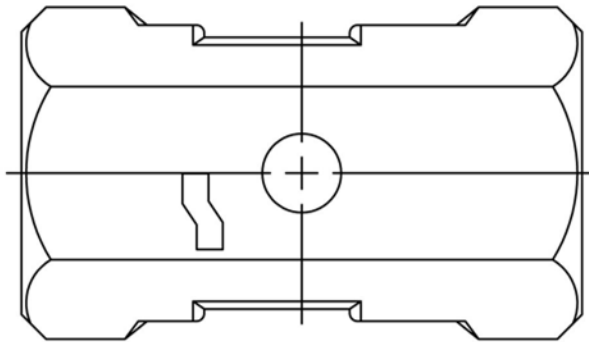


SIZE	d	L	L1	H	W	S	Cv FACTOR	TORQUE kgf-cm	kgs
1/4"	5	39	19	35	66	17	3.8	12	0.070
3/8"	7	44	21	36	74	21	4.0	12	0.102
1/2"	9.2	56.5	27.5	41	89	25	4.5	13	0.166
3/4"	12.5	59	30	44	89	32	9.0	20	0.247
1"	16	71	36	51	105	38	16.0	38	0.412
1-1/4"	20	78	39	56	105	48	24.0	50	0.672
1-1/2"	24.5	83	41.7	64	130	53	37.0	72	0.838
2"	32	100	50	71	130	65	68.0	90	1.384



ITEM	PART	MATERIAL	QTY
1	BODY	ASTM A351-CF8M	1
2	INSERT	ASTM A351-CF8M	1
3	BALL	ASTM A351-CF8M	1
4	BALL SEAT	PTFE 15%	2
5	JOINT GASKET	PTFE	1
6	STEM	ASTM A351-CF8M	1
7	THRUST WASHER	PTFE	1
8	STEM PACKING	PTFE	1
9	STEM WASHER	AISI 304	2
10	HANDLE	AISI 304	1
11	SPRING WASHER	AISI 304	1
12	STEM NUT	AISI 304	1
13	PLASTIC	PLASTIC	1

REV.	A				
CHECKED	Morris	DATE	2004/02/05	TYPE	NP18
DESIGNER	Kevin	SCALE	Scaled to Fit	DWG_NO.	NP18
DRAWN	Kevin	DESCRIBE	1pc. 1000# Reduced Port Ball Valve		

