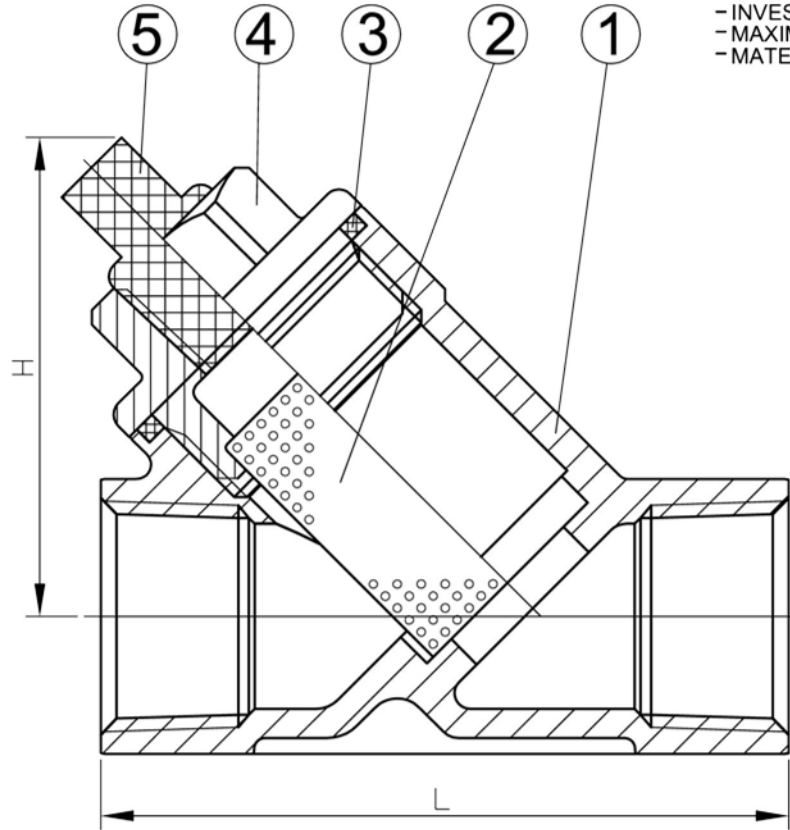
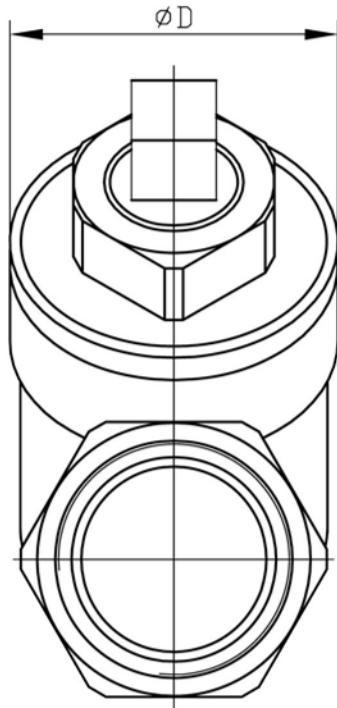



SIZE	DN	1/4"	3/8"	1/2"	3/4"	1"	1 1/4"	1 1/2"	2"	2 1/2"	3"
	NPS	6	10	15	20	25	32	40	50	65	80
L		65	65	65	80	80	105	120	140	190	140
H		45	45	45	53	65	70	80	103	102.7	141.9
D		31	31	31	36	45	50	59	75	95.4	111.5
WEIGET/KGS		0.260	0.230	0.240	0.360	0.690	0.860	1.021	1.880	5.14	7.26

**FEATURES**

- PIPE THREAD IN ACCORDANCE : NPT,BSPT  
DIN259,DIN2999,ISO228 CLASS A
- CLASS 800 W.O.G.
- INVESTMENT CASTING BODY
- MAXIMUM WORKING TEMPERATURE 230°C
- MATERIAL:SS316 / ASTM A351  
Gr-CF8M / DIN1.4408



ITEM	PART NAME	MATERIAL
1	BODY	CF8M
2	SCREEN	SUS304
3	GASKET	PTFE
4	CAP	CF8M
5	STOPPER	SUS304

REV.	A				
CHECKED	Morris				
DESIGNER	Kevin	SCALE	Scaled to Fit	DWG_NO.	<b>NPYS8</b>
DRAWN	Kevin	DESCRIBE	<b>800# WOG THRD Y-Strainer</b>		